

Information Guide



HOLY CROSS CEMETERY
CATHOLIC CEMETERIES ASSOCIATION
Faith, Hope, and Remembrance

The Catholic Cemeteries Association meets the needs of families, individuals, and parishes surrounding the death of a loved one.

In providing a consecrated place for burial, we treat the deceased and their families with dignity and respect, while offering a spiritual and physical environment that encourages frequent visitation - where faith is strengthened, hope is awakened, and remembrance is accomplished through perpetual care.

We represent a Church family that is unbroken by death. We celebrate the death, and resurrection of our Lord, which offer to us the promise of eternal life.



From the Director

Welcome to the Catholic Cemeteries

Thank you for choosing the CCA. We are truly honored to care for you and your family during your time of need. Whether you're coping with a recent loss or planning for the future – **we are here for you.**

The CCA manages and maintains 19 cemeteries across the Diocese of Cleveland. Our properties include over 1,900 acres of land, 35 miles of roads, and 60 buildings. We work very hard to maintain our cemeteries, and are constantly improving our grounds by paving roads, planting trees, opening new burial areas, upgrading facilities, and adding streams and ponds. We are **self-sustaining** and the income generated from all CCA products is invested back into your Catholic cemeteries. This income ensures that each of these improvements can be made.



We make all of our decisions with you, our families, in mind and strive to make our cemeteries places of peaceful, sacred, and prayerful remembrance. The Catholic Cemeteries Association understands the responsibility placed on us to care for families and their dearly departed loved ones. While nothing can take away the pain of losing someone you love, we hope to provide families with the support and guidance they need during life's most difficult times.

We look forward to serving your family and our Catholic community for years to come.

God Bless,

A handwritten signature in dark ink that reads "Andrej N. Lah". The signature is fluid and cursive, written in a professional style.

Andrej N. Lah
Director

The Catholic Burial Tradition

Why a Catholic Cemetery?

Many people wonder what makes a Catholic cemetery different from any other cemetery. In short, Catholic cemetery grounds are consecrated, and therefore treated as an extension of the church. Choosing to be buried in a Catholic cemetery ensures that you will be surrounded by the Catholic faith and members of the Church, even in death.

Just like the other sacraments we receive throughout our life, such as baptism, first communion, and marriage, God is calling to be present with us at the completion of our life's journey. John 11:25-26 assures us that death is not our final destination, but rather a transition to an even greater closeness to God.

Catholic Burial Rites

Practicing Catholic Burial Rites sets us on the path to healing, wholeness, and peace.

Vigil (Wake)

Family and friends join the bereaved in prayer, to share stories and remembrance of the deceased, provide comfort, and to express their own sorrow and grief.

Funeral Liturgy (Mass)

Hoping to lead our loved ones to paradise with the aid of our prayers, the Mass is a time to express our love for the deceased in the presence of God.

Right of Committal (Burial)

As the final ceremony in a Catholic funeral, burial allows the deceased to pass from the community of mourners into the community of those who are already with God.

The Church & Cremation

The Catholic Church has permitted cremation since 1963.

Burial in a Catholic Cemetery provides...

- ✝ A permanent burial site for cremated remains; a place for eternity.
- ✝ A peaceful and sacred place for family, friends, and future generations to pray and reflect.
- ✝ An open space where all are welcome to visit loved ones on a holiday, birthday, anniversary, or other special day.
- ✝ A secure location to keep our loved ones. Over time, families may lose track of cremated remains while moving, due to a change in family relationships, or when passing on to future generations.



Full Body Burial Options



Grave



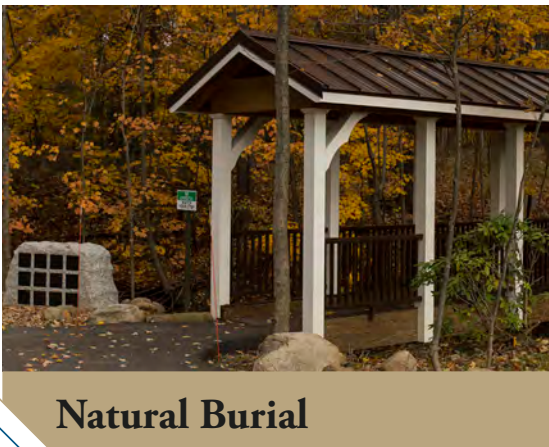
Mausoleum



Family Mausoleum



Family Sarcophagi



Natural Burial



Community Sarcophagi

Cremation Burial Options



Thin Niche



Columbarium



Mausoleum



Grave



Niche Pedestal



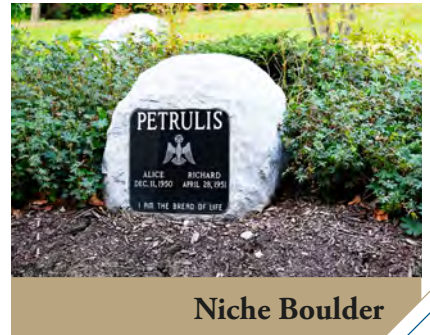
Family Mausoleum



Niche Alcove



Boulder Columbarium



Niche Boulder



Natural Burial

Outer Burial Containers

Our pressure tested outer burial containers protect the casket or urn from the weight of the earth, and preserve the appearance and safety of the gravesite. Each outer burial container has unique qualities and features. Unsealed outer burial containers are available for both cremation and full body burial. Please ask your Family Service Representative for more details.

Basilica[®] Cement Series



Basilica[®] Steel Series



Cremation Urns and Vaults

Basilica® Cremation Series



Cultured Marble Urn Jade



Cultured Marble Urn Ruby



Cultured Marble Urn Black



Cultured Marble Urn Blue



Cultured Marble Urn Gold



Cultured Marble Urn Pink



Cultured Marble Urn American Flag



Cultured Marble Urn White



Cultured Marble Urn Brown



Small Cremation Chest



Tall Cremation Chest

Markers & Monuments

A variety of memorialization options are available to you. Your Family Service Representative will work with you to design a custom memorial that is unique to your family. Proceeds from the purchase of your memorial through the CCA are invested back into your cemetery.



Flush Marker



Pillow Marker



Slant Memorial



Monument



Custom Monument



Memorial Bench

Granite Colors

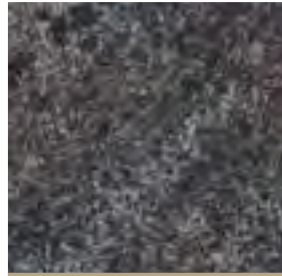


Please note, those listed are the most popular granite colors, additional options are available.

Granite color and grain may vary.



Basilica® Pink



Basilica® Paradiso



Basilica® Brown



Basilica® Red



Basilica® Gray



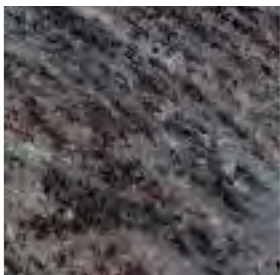
Basilica® Black Mist



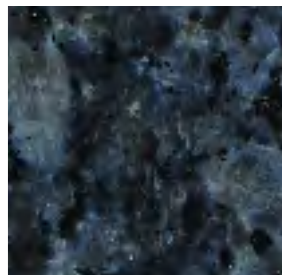
Basilica® Jet Black



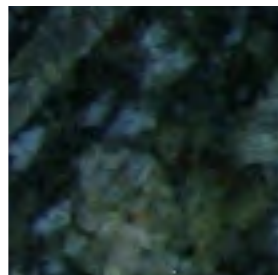
Basilica® Midnight Black



Basilica® Bahama Blue



Basilica® Blue Pearl



Basilica® Butterfly Blue



Basilica® Green

Emblems & Portraits

Special adornments, such as bronze emblems and personal portraits, may be added to crypt and niche fronts. Some restrictions apply.

Ask your Family Service Representative for a complete list of options.



Angel Facing Left



St. Anthony



Praying Hands



Sacred Heart of Jesus



Jesus



Madonna & Child



Mary



Pieta



Service



Color Portrait



Black & White Portrait



Niche Portrait

Decorations

The Catholic Cemeteries Association offers a wide variety of items to help you remember your loved one. Call or stop by the cemetery office on your next visit, or purchase online after finding your loved one via our Burial Search page. Some restrictions apply.



Flag Display Case



Winter Crosses



Winter Wreaths



Crypt / Niche Bouquets



Yearly Bouquet Program

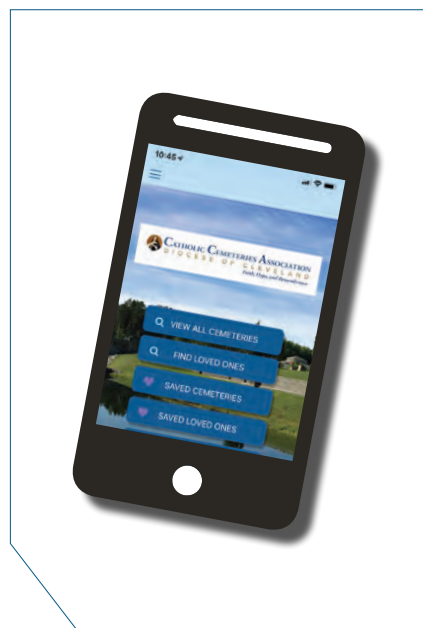


Fresh Flower Bouquets






Stay Connected

Find Your Loved One Using The CCA App!

- ✚ GPS navigation to your loved one's burial location.
- ✚ Save cemeteries and loved ones.
- ✚ Purchase decorations



Follow Us on Social Media

-  @CatholicCemeteriesAssociation
-  @ClevelandCatholicCemeteries
-  @CLECatholicCems
-  @CLECatholicCems
-  @ClevCatholicCemeteries

Listen to Our Podcast

Available where ever you get your podcasts



On the Web
www.clecem.org

Bereavement Support Groups / Special Events

The Catholic Cemeteries Association is committed to ministering and assisting families before, during and after the death of a loved one. Our Catholic faith gives us the strength and courage to help us in our grieving and reminds us of the promise of the spiritual reunion with our loved ones.

In a comfortable and supportive environment, you'll find a warm fellowship of people with similar grief experiences. Come. Listen. Be in the presence of those who understand.



Memorial Day Mass



Anniversary Mass



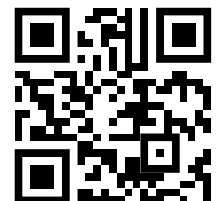
Cemetery Sunday Mass



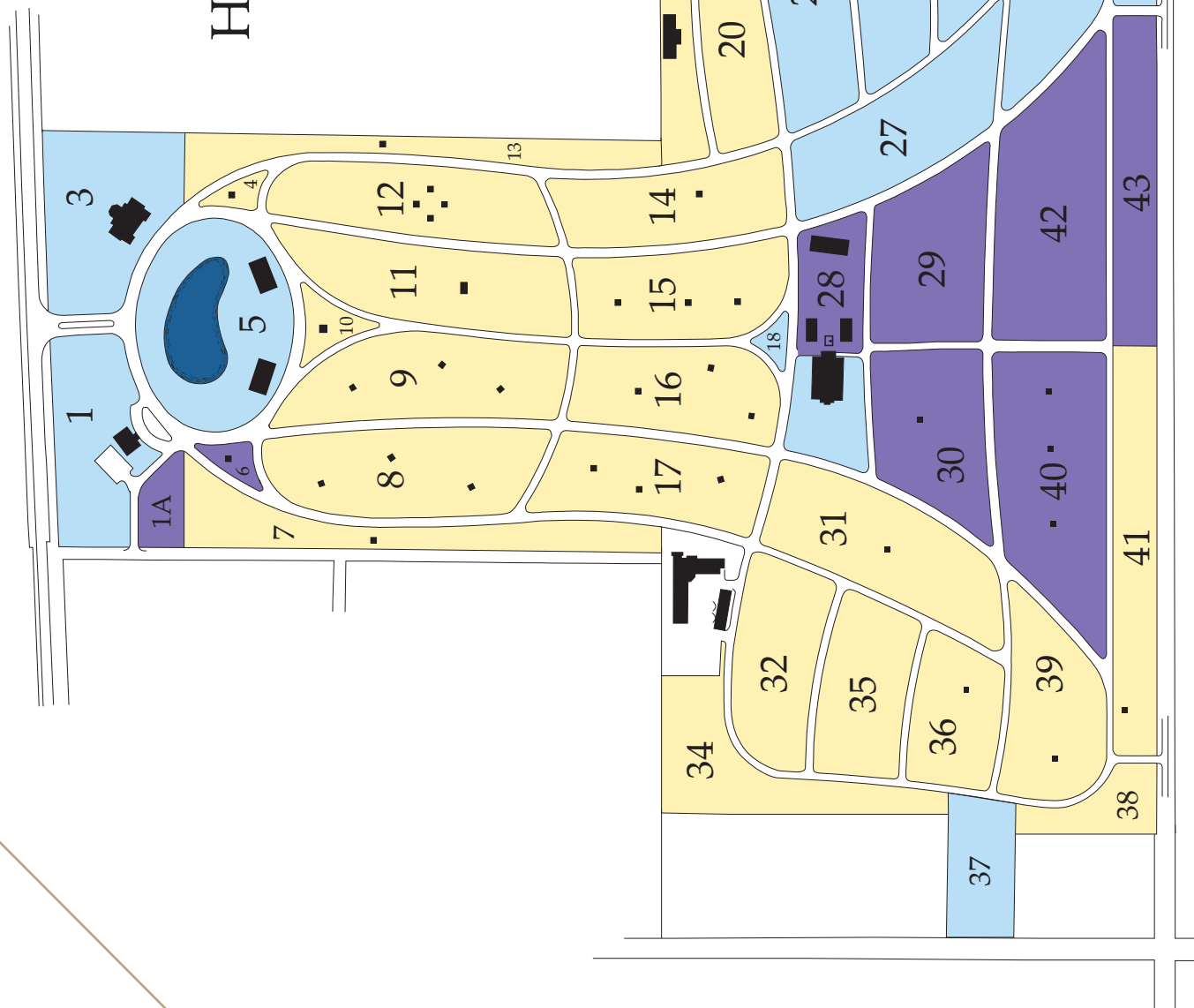
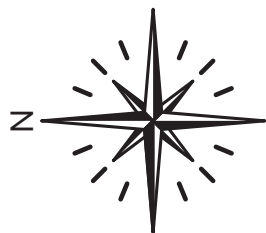
Walk to Remember

Special events are scheduled throughout the year to pray for and to remember our dearly departed.

View our website for more details or scan the QR code below.



HOLY CROSS CEMETERY CLEVELAND, OHIO



Place of Interment Pricing

Some lawn level marker graves may be converted to a monument lot. Certain fees apply.

Please ask for details.

Holy Cross Cemetery, Cleveland

Per Single Grave

Section 1A	\$2,035	Section 30	\$1,925
Section 6	\$2,365	Section 40	\$1,815, \$2,035
Section 12 Cremation Grave	\$1,705	Section 42	\$1,540, \$2,035
Section 19	\$1,650	Section 43 - Regular Graves	\$1,320
Section 29	\$1,540 \$2,035	Section 43 - Cremation Graves	\$825

Mausoleums & Columbariums

Garden of the Apostles Mausoleum

Inside Single Niche	\$2,970
Outside Single Niche	\$2,365

St. Jude Mausoleum

Inside Single Crypt	\$9,350 to \$11,275
Inside Double Crypt	\$19,305 to \$20,570
Cremation Niche	\$1,815 to \$4,730

St. Francis of Assisi Mausoleum

St. John Paul II Mausoleum

Inside Single Crypt	\$13,035 to \$16,555
Inside Double Crypt	\$20,130 to \$24,860
Outside Single Crypt	\$9,460 to \$14,190
Outside Double Crypt	\$16,555 to \$22,495
Cremation Niche	\$2,695 to \$4,730

St. Benedict Mausoleum

Inside Thin Niches	\$3,575 to \$4,180
--------------------	--------------------

Section 3

St. Peter Columbarium - Our Lady of Fatima Columbarium

Single Niche	\$2,750
Double Niche	\$5,940

Section 15

St. Peter Columbarium - St. Paul Columbarium

St. Anne Columbarium - Our Lady of Fatima Columbarium

Single Niche	\$2,090
--------------	---------

Section 19 Columbariums

Single Niche	\$1,815
--------------	---------

Section 28

Mary Freestanding Columbarium - St. Patrick Columbarium

Single Niche	\$2,090
--------------	---------

Section 28 - St. Peter Pavilion

Single Niche	\$3,000 to \$4,000
Double Niche	\$6,500 to \$8,500
Freestanding Single Niche	\$3,500

Section 28B - Apostle's Creed Columbarium

Single Niche	\$2,750
Double Niche	\$5,940

Section 29 - Our Lady & Child Columbarium

Single Niche	\$2,750
Double Niche	\$5,940

Section 30

Boulder Niches	\$2,365
----------------	---------

Section 40

St. Anthony Columbarium

St. Christopher Columbarium

Tandem Niches	\$5,940
Single Niches	\$2,750

Section 41 St. Therese Columbarium

Tandem Niche	\$5,940
--------------	---------

The Association will assess a 15% non-refundable charge on the sale of each place of interment and option. These funds will be placed into the Perpetual Care Trust for the sole purpose of the continuing care of the Association's cemeteries.

Additional charges may apply. Please speak to a Family Service Representative for information.

Prices Subject To Change ~ Interest Free Financing Available

Revised November 2023



“I am the resurrection and the life; whoever believes in me will never die.”

KEEP IN MIND
THAT JESUS CHRIST
HAS DIED FOR US
AND IS RISEN
HE IS OUR SAVING LORD
HE IS JOY FOR ALL AGES.

-John 11:25-26

All Saints Cemetery
480 W. Highland Road
Northfield
Extension 5

All Souls Cemetery
10366 Chardon Road
Chardon
Extension 4

Assumption of Mary Cemetery
14900 Brookpark Road
Brook Park
Extension 3

Calvary Cemetery
10000 Miles Avenue
Cleveland
Extension 2

Calvary Cemetery
555 N. Ridge Road
Lorain
Extension 6

Holy Cross Cemetery
100 E. Waterloo Road
Akron
Extension 7

Holy Cross Cemetery
14609 Brookpark Road
Brook Park
Extension 3

Holy Trinity Cemetery
33843 Detroit Avenue / Jaycox Road
Avon
Extension 8

Resurrection Cemetery
6303 Center Road
Valley City
Extension 9

St. John Cemetery
7000 Woodland Avenue
Cleveland
Extension 2

**St. Joseph Cemetery
Elmhurst Park**
32789 Detroit Road
Avon
Extension 8

St. Joseph Cemetery
7916 Woodland Avenue
Cleveland
Extension 2

St. Mary of the Falls Cemetery
1260 W. Bagley Road
Berea
Extension 3

St. Mary Cemetery
2677 West 41st Street
Cleveland
Extension 3

St. Mary Cemetery
4720 E. 71st Street
Cuyahoga Hts.
Extension 2

St. Mary Cemetery
7284 Lake Avenue
Elyria
Extension 6

St. Paul Cemetery
1231 Chardon Road
Euclid
Extension 2

10000 Miles Avenue Cleveland, OH 44105 216-641-7575 www.clecem.org

